

Atrial Septal Defect Occlusion with Shanghai Shape Memory Alloy Memocarna ASD Occluder

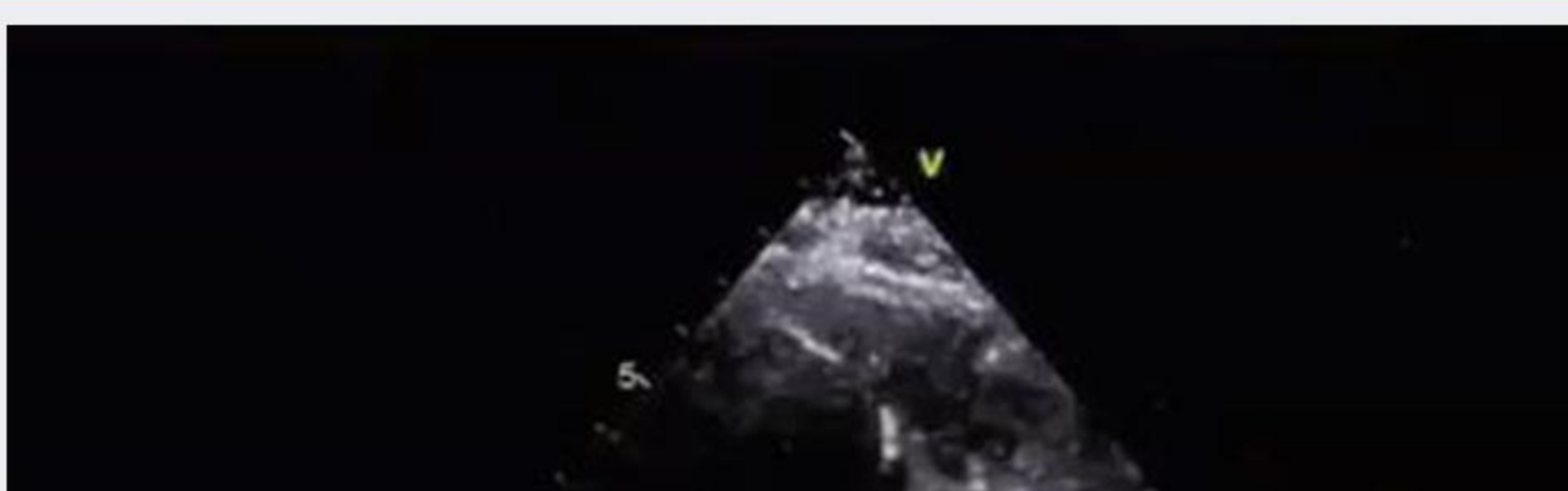
Atrial septal defect (ASD) is one of the most common types of congenital heart defects, occurring in about 25% of children [1]. In such cases, transcatheter closure of secundum ASDs has been demonstrated to be safe and effective in both children and adults. However, appropriate patient selection and an accurate device selection is mandatory to prevent serious complications such as ventricular arrhythmias, outflow tract obstruction of the left and right ventricle, or ischemic events secondary to the obstruction of blood flow due to device embolization [2].

To enhance the safety and efficacy of ASD transcatheter closure, especially for children, Shanghai Shape Memory Alloy has launched the second generation of occluders, MemoCarna ASD occluder. MemoCarna has removed one hub to lower the device weight, thus reduce load of the heart. And its enhanced oxidized nitinol wire has increased flexibility and elasticity.

Patient Information

Female, 46 years old, ASD size is 20-22mm and close to the aorta. A 30mm MemoCarna ASD occluder is chosen.

During operation



This is a watermark for the trial version, register to get the full one!

Benefits for registered users:

- 1.No watermark on the output documents.
- 2.Can operate scanned PDF files via OCR.
- 3.No page quantity limitations for converted PDF files.

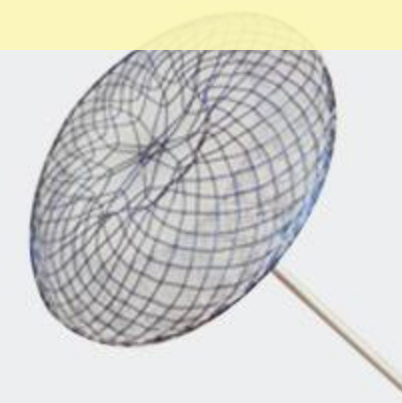
Remove Watermark Now

Post operation

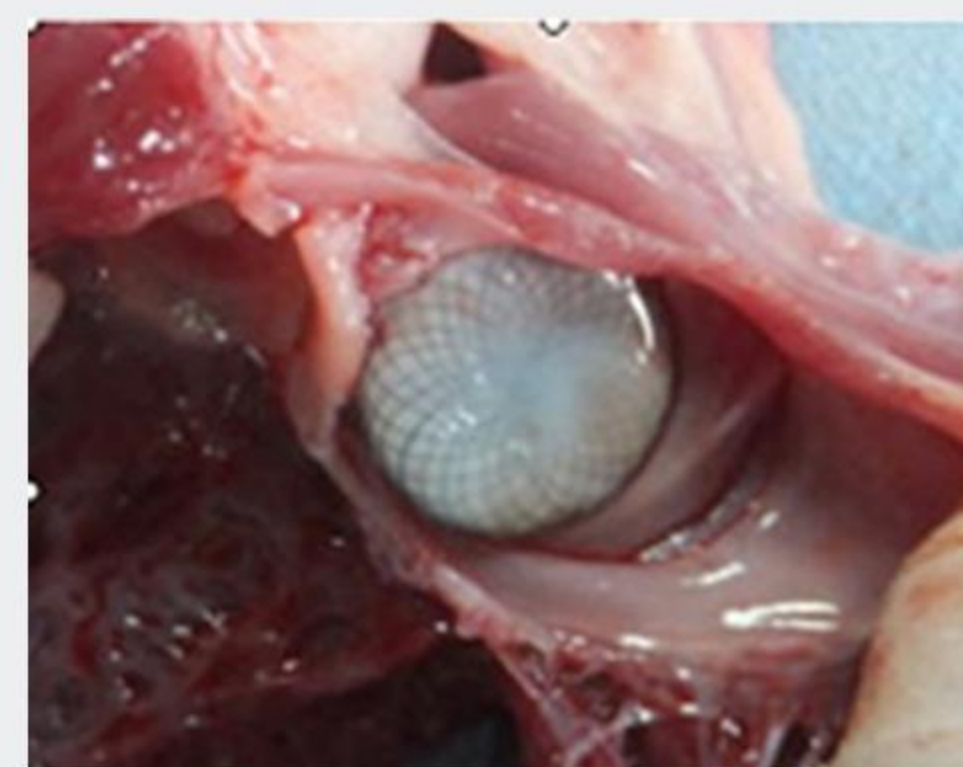


The occluder was successfully implanted with no residual shunt under echo. MemoCarna ASD occluder was well formed in situ. Online domestic experts and international expert Dr. Scott Lim believes that the operation was very successful.

MemoCarna ASD Occluder

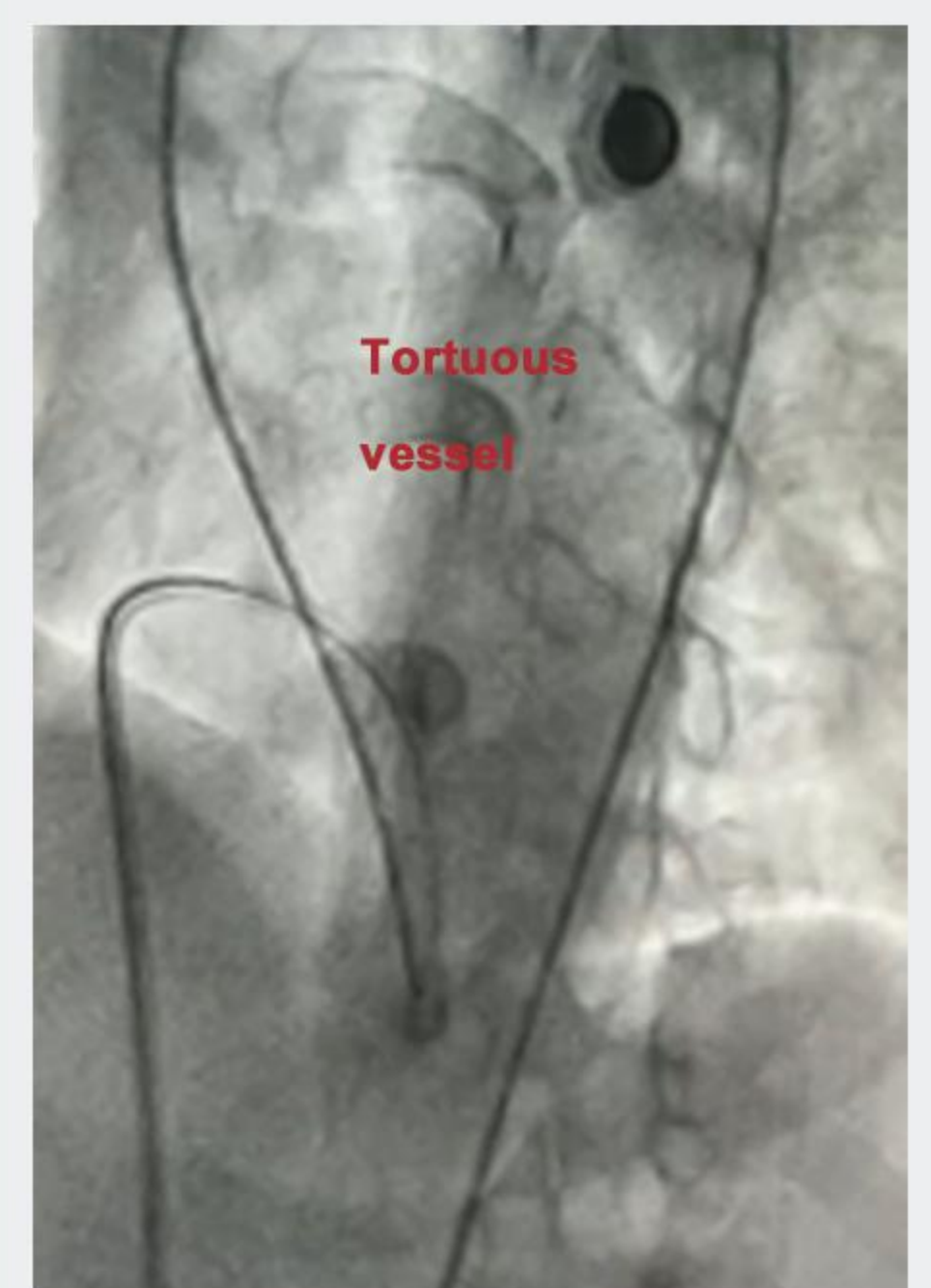


- Updated braiding technology
- Effectively decreased nickel ions releasing
- Minimize metal implantation content



- Smooth disks facilitate complete and prompt endothelialization
- Left disk without stainless steel hub minimize hemorrhage risk
- Less complication after surgery, better clinical outcomes

MemoPart Delivery System II



Tortuous vessel

- Improved anti-kinking performance, better choice for tortuous vessel
- Stainless steel braiding wires improve sheath radiopacity

References

- [1] Meissner I, Whisnant JP, Khandheria BK, Spittell PC, O'Fallon WM, Pascoe RD, Enriquez-Sarano M, Seward JB, Covalt JL, Sicks JD, Wiebers DO. Prevalence of potential risk factors for stroke assessed by transesophageal echocardiography and carotid ultrasonography: the SPARC study. *Stroke Prevention: Assessment of Risk in a Community*. Mayo Clin. Proc. 1999 Sep;74(9):862-9.
- [2] Martínez-Quintana E, Rodríguez-González F. Risks Factors for Atrial Septal Defect Occlusion Device Migration. *Int J Angiol*. 2016;25(5):e63-e65. doi:10.1055/s-0034-1395976

LEPU MEDICAL TECHNOLOGY (BEIJING) CO., LTD

Address: No.37 Chaoqian Road, Changping District, Beijing, China

Website: <http://en.lepumedical.com>

Sales Manager: He Wang / Harrison

Mob/Whatsapp: +86 18611863903

Email: harrison.wang@lepu-medical.com